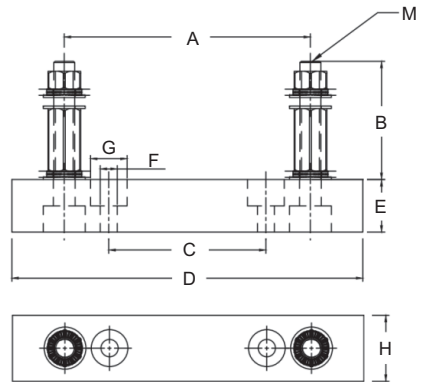
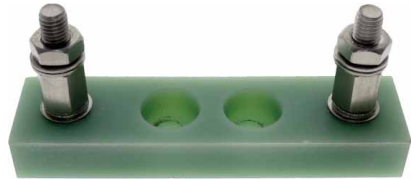
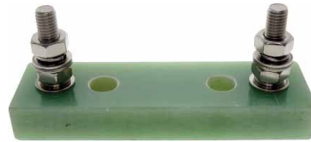


EV / EVSE BOLTED FUSE BLOCK FIXED



The BFR series fuse bases are suitable for use in automotive vehicles and automotive supply equipment. The bolt mount assembly system uses a wedge lock system to withstand extreme vibration or dynamic loads. The Adler BFR series EV fuse block uses special materials for use with high fault currents and temperatures specifically for automotive fuses applications.

- Rated Voltage:** 1000VAC / 1000VDC
- Rated Current:** 200 A
- Operating Temperature:** -50°C to +180°C
- Max Voltage:** 13-18 kV
- Insulation Board Material:** FR4
- UL94 Flame Retardant Grade:** 94HB
- Insulation Resistance:** 50,000 M ohm
- Studs:** Stainless steel.
- Hardware:** Detend edged washers. Suffix -S.
- Pack Size:** 1, 20
- Notes:** Fuse not included.



EV Fuse Range	Fuse Block	Dimensions in MM									
Adler Series	Part Number	A	B	C	D	E	F	G	H	M	
AE5-620	BFR063-38-M6	63	38	31	84	15	5.5	9	25	M6	
AE5-625, AE5-631	BFR071-46-M8	71	46	25	96	15	8.5	14	30	M8	
AE7-i25	BFR094-45-M8	94	45	60	134	20	6.5	14	25	M8	
AE7-i38, AE7-i51	BFR099-70-M10	99	70	60	146	20	6.5	14	42	M10	
AEX-731	BFR106-46-M8	106	46	60	146	20	6.5	14	35	M8	
AEX-738, AEX-751	BFR116-72-M10	116	72	60	146	20	6.5	14	42	M10	

RELATED PRODUCTS:



EV 500V Fuses
AE5
(see p.32)



EV 800V Fuses
AE7
(see p.33)



EV 1000V Fuses
AEX
(see p.34)



Email: info@prolecproducts.com
Web: www.prolecproducts.com